

Memory Switch Setting Utility User's Manual

Rev. B

Table of Contents

1	Introduction	2
1.1	Purpose of This Manual and Target Users	2
1.2	Composition of This Manual	2
1.3	Note in the case of using this utility	2
1.4	System operating environment	2
2	Installation	3
2.1	System Requirement	3
2.2	Installation	3
2.3	Un-installation	5
2.4	Web Update	6
3	The basic operation of application	8
3.1	Confirm the communication conditions with a printer	8
4	Printer Status	10
4.1	Operation: Get status, Set status, Save status, Read status, and Initial settings	10
4.2	Memory Switch Setting	11
4.3	Dip Switch	12
4.4	Communication Conditions/User NV/User NVG	12
4.5	Customize Value	14
4.6	Reset—Possible Maintenance Counter	14
4.7	Paper Layout Setting	15
5	Printer Sequence	16
5.1	Paper layout automatic setting	16
5.2	Head Nozzle check pattern printing	16
6	Appendix	18
6.1	Error Messages	18
6.2	Information of this utility's version	18

1 Introduction

1.1 Purpose of This Manual and Target Users

This manual explains about installation and operation of Memory switch Setting Utility.
This manual is for the person in charge of the TM Printer operator.

1.2 Composition of This Manual

Chapter 2 explains the method of installing the utility.

Chapter 3 explains the method of operating the utility.

Chapter 4 explains the error messages and how to solve the problem.

Chapter 5 explains the information of the utility's version.

1.3 Note in the case of using this utility

- . In this utility, the flow control of XON/XOFF is not supported. So you need to change the printer's setting to the DTR/DSR control.
- . Parallel port uses the LPT1 with the computer, but parallel port does not operate when printer driver is mounted to the LPT1 in Windows NT.
- . In case that the utility (English) is installed to the OS (Japanese), the characters occasionally display missing on the display. Then you need to change the area setting of the control panel in the computer.
- . It occasionally happens that Touch Panel does not function when this utility is performed with EPSON IM-310 or EPSON SR-600. Then you need to get EPSON Touch Panel Driver, and install it in the computer.
- . In case that the product "TM-T90" carries TM-T88II compatible mode by setting of Memory switch, you need to select the TM-T90 (TM-T88II Compatible mode) at the "Device Selection" on the utility's screen.

1.4 System operating environment

This application operates only on the operating system below.

- . Windows 98
- . Windows NT4.0
- . Windows 2000

2 Installation

This chapter explains how to install the Memory Switch Setting Utility ("TMSSUTL").
Read this chapter when you install it.

2.1 System Requirement

Be sure to confirm the system requirement (OS, HDD space) before installing TMSSUTL.

For more details, refer to the release note.

2.2 Installation

Follow the steps below to install TMSSUTL.

2.2.1 Start your operating system.

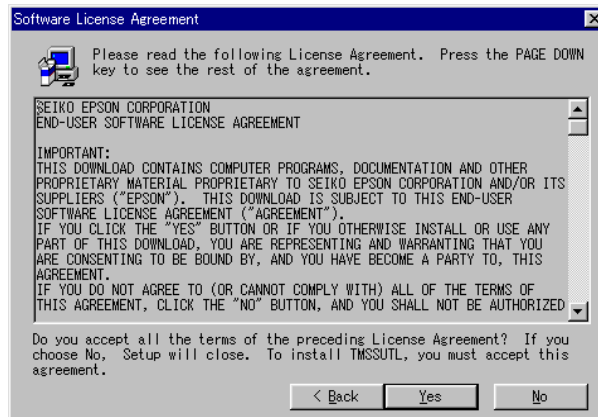
Run "SETUP.EXE" in the setup disk.
The install program of TMSSUTL starts.

2.2.2 Welcome



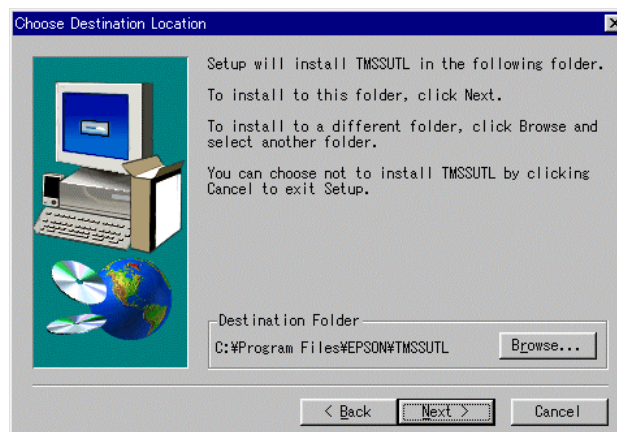
Be sure to read it.
To continue installing, click [Next].
* Click [Cancel] to stop installation.

2.2.3 Software License Agreement



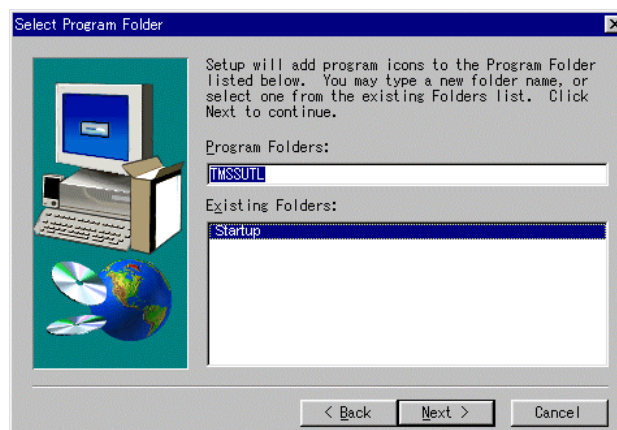
Be sure to read it.
To continue installing, click [Yes] or [No].

2.2.4 Choose Destination Location



- Click [Next] if you want to install the utility in the folder displayed in the Destination Folder. TMSSUTL is installed in the folder you set here.
- To change the destination folder.
 - Click [Browse...] to select a new folder. Click [Next] to continue installing.
 - * Click [Cancel] to stop installation.

2.2.5 Select Program Folder



- To add program icon to the folder displayed in the Program Folder, click [Next].

To change the program folder, execute either of the following.

- Enter the new folder name in the Program Folder text box.
- Select the folder from the Existing Folders list.

Click [Next] to continue installation. The TMSSUTL icon will be added to the folder displayed in the Program Folder.

* Click [Cancel] to stop installation.

2.2.6 Copy of programs

- When you click [Next] in the Select Program Folder dialog box, the installation will start.

* Follow the message if it appears instructing you to replace the setup disk.

2.2.7 Setup Complete



When the installation is completed, the Setup Complete dialog box appears. Click [Finish] to complete the installation.

2.3 Un-installation

You can uninstall TMSSUTL using Add/Remove Programs in the Control Panel. Follow the steps below to uninstall TMSSUTL.

2.3.1 Control Panel

Double-click the Control Panel icon.

2.3.2 Add/Remove Programs Properties

Run Add/Remove Programs that is located in the Control Panel of your operating system.

2.3.3 Select TMSSUTL

Select TMSSUTL from the list.

2.3.4 Add /Remove

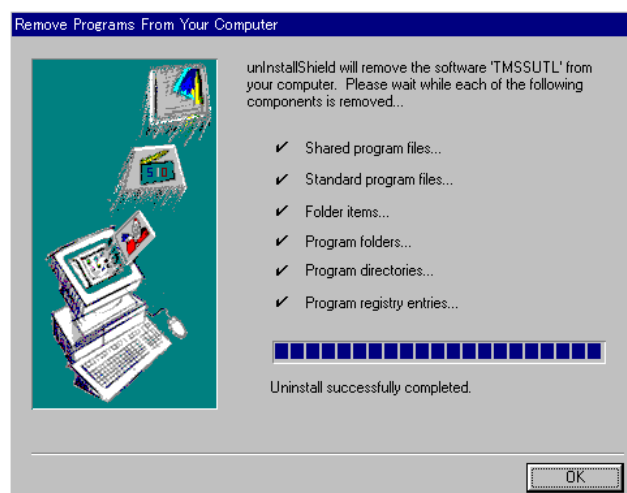
Click [Add/Remove].

2.3.5 Confirm the file deletion

If the message appears, click [Yes] to delete TMSSUTL.

* If you select [No], the uninstallation will be canceled.

2.3.6 Remove Programs From Your Computer



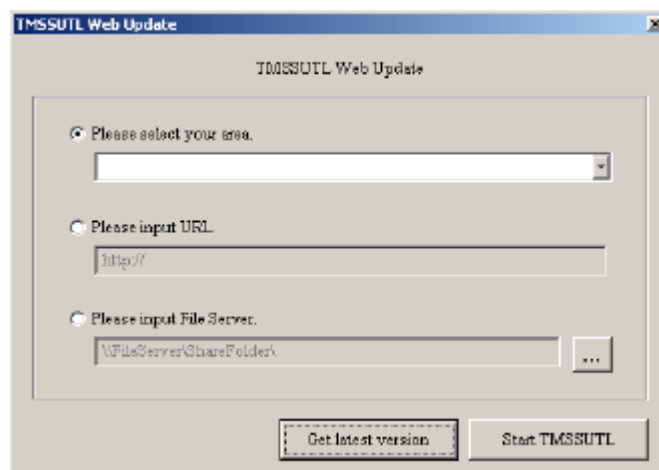
The program is uninstalled automatically.
Click [OK].

2.3.7 Exit

Close all open dialog boxes.

2.4 Web Update

When TMSSUTL is installed, Webupdate.exe is installed together too. We release the update module from epson-poso.com site when the program is updated.



Functions

Please select your area

Uses the epson-poso.com as update server.

Update modules are released from epson-poso.com for each area. You can specify the area from JAPANESE, USA, EUROPE and ASIA.

Please input URL.

Uses your web server as update server. If you have update module, place update module to your web server and specify the address.

Please input File Server

Uses your file server as update server. If you have update module, place update module to your file server and specify the address.

[Get latest version]

TMSSUTL is updated if latest module was released.

[Start TMSSUTL]

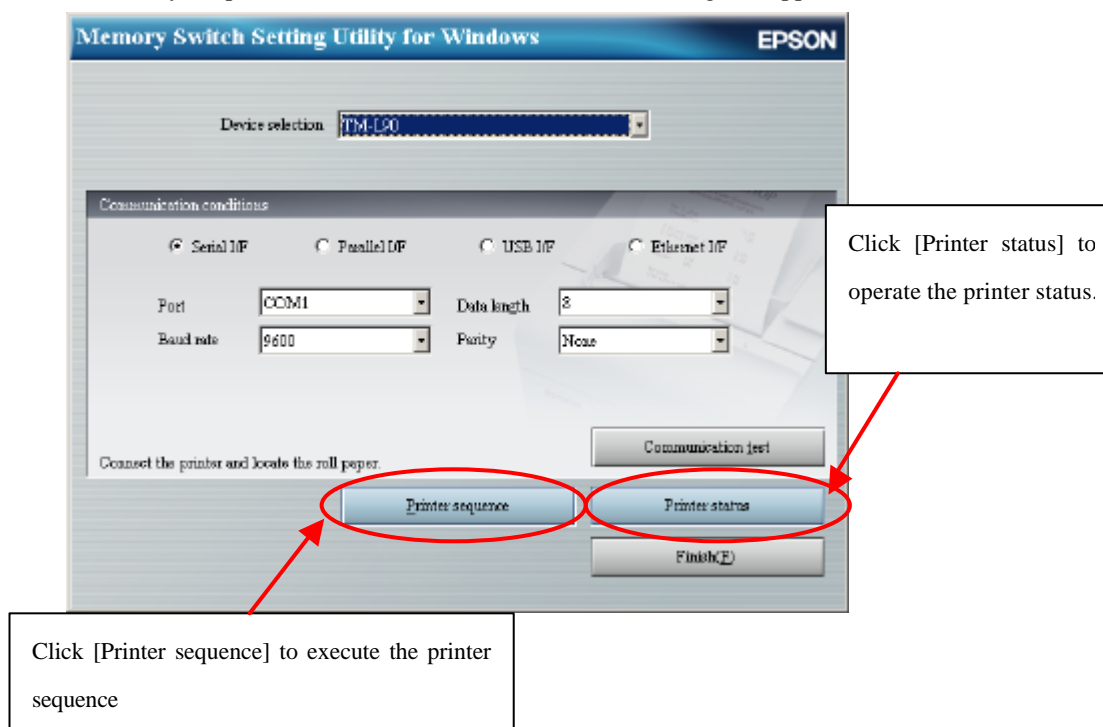
TMSSUTL is started.

3 The basic operation of application

This chapter explains the operation of Memory Switch Setting Utility (TMSSUTL)

3.1 Confirm the communication conditions with a printer.

When this utility is operated, the Communication conditions dialog box appears.



You can confirm whether the computer can communicate with a printer by execution the communication test in this dialog.

Functions

Device selection

Select the model that is connected.

Serial I/F, Parallel I/F, USB I/F or Ethernet I/F

Select the I/F used with the printer.

Set the following parameters when the serial I/F is selected.

- Port

Select the port where the printer is connected.

- Baud rate

Select the same value as the baud rate set in the printer.

- Data length

Select the same value as the data length set in the printer.



Note:

Select only 8 bits to control the printer.
When the printer is set in 7 bits, change to 8 bits.

- Parity

Select the same value as the parity set in the printer.

- IP Address

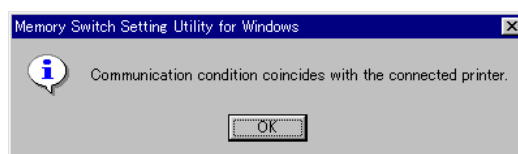
Specify the same value as the IP Address set in the printer.

[Refresh Port]

Search the connected printer with USB Port.

[Communication test (T)]

Confirm whether the connected printer is TM or not.
Normally the following message appears.



Note:

To execute the communication test, roll paper is inserted in the TM printer and the printer is ready to start printing. It checks first whether cable connection a printer has been performed or the power supply of a printer is turned on it.

[Printer status]

When this button is clicked, the “printer status selection” screen that the function peculiar to a printer is executed on appears. And execute the acquisition, setting, editing, and saving for the status set to the printer.

[Printer sequence (P)]

A [next] button is displayed when the selected printer is special.

When this button is clicked, the “printer sequence selection” screen that the function peculiar to a printer is executed on appears.

[Finish (F)]

Terminate TMSSUTL.



Note:

- The values set when TMSSUTL is ended can be used for the next time you start TMSSUTL.
- In this utility, the flow control of XON/XOFF is not supported. You need to set to the DTR/DSR control by the printer's DIP switch or the Memory switch when using the printer.

4 Printer Status

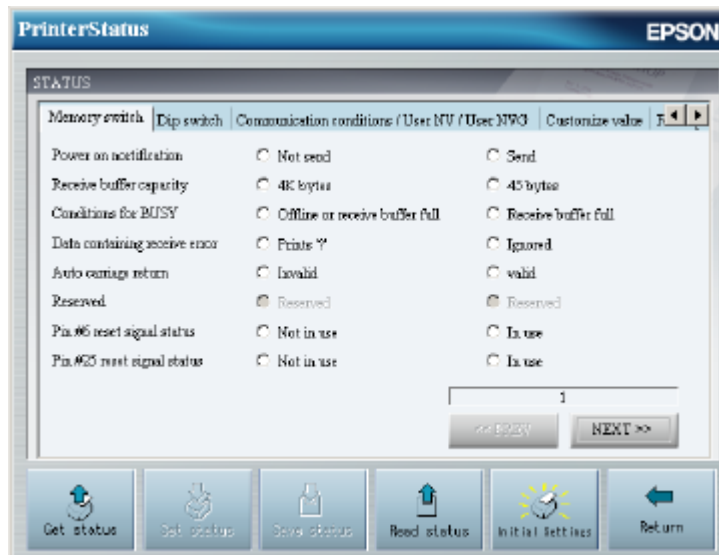
When the [Printer status] button is selected in the Communication setting dialog box, the Printer Status dialog box appears.



Note:







- A screen is displayed only if your printer has that function.
- This utility has some functions that are not used with certain printers or certain firmware versions.

4.1 Operation: Get status, Set status, Save status, Read status, and Initial settings

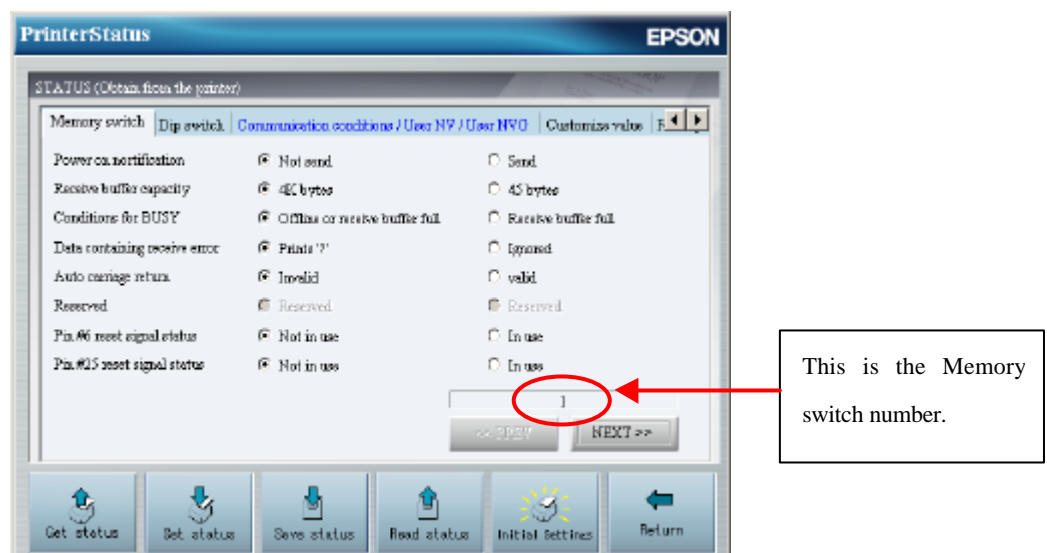


In this screen, you can acquire or update the value saved in the printer and the value of switches. Also, you can save the acquired value to the file and read that file.

Functions

 Get status	Acquire the set value of the connected printer and display them on the screen
 Set status	Set the value that can be updated in the value displayed on the screen to the printer.
 Save status	Save a set value of the printer displayed on the screen to the file.
 Read status	Read the set value saved in the file and display them on the screen.
 Initial Settings	Set the default values for each standard specification printer model
 Return	The data displayed on the Printer status screen is canceled, and return to the Communication setting screen.

4.2 Memory Switch Setting



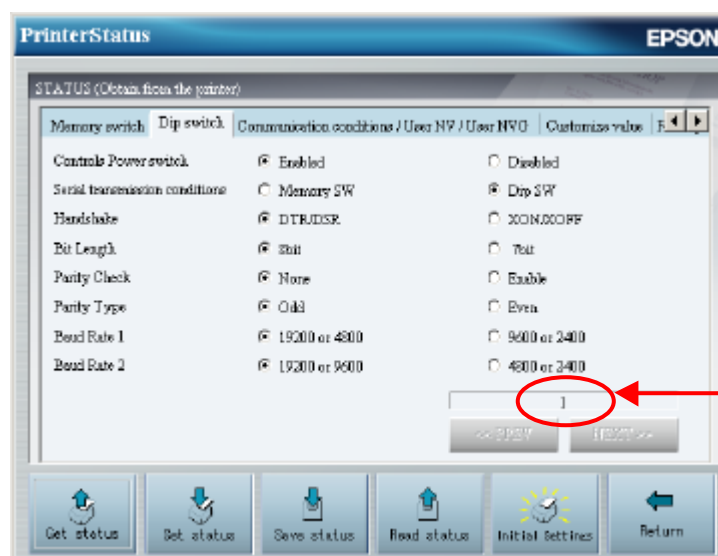
A set value can be changed by click the “set status” button. When the printer has some Memory switch, you can select the Memory switch number by using << PREV button and NEXT >> button displayed on the screen. The displayed item may differ depending on the printer model.



Note:

The repeated setting may express by selection the interface. About the kind of the confirmed setting, refer to the User's Manual with which the printer was enclosed in the box.

4.3 Dip Switch



This is the DIP switch number.

A set value of the DIP switch cannot be changed. The displayed item may differ depending on the printer model.

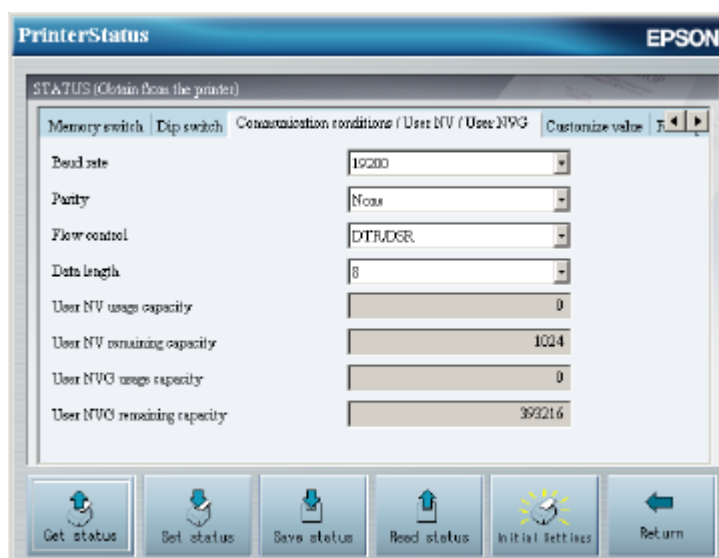
Like baudrate 1 and baudrate 2, the combination two or more items may express one setting value. The baudrate setting is 19200 bps on the figure. That is, the value which overlaps in the checked item is setting value.



Note:

The repeated setting may express by selection the interface. About the kind of the confirmed setting, refer to the User's Manual with which the printer was enclosed in the box.

4.4 Communication Conditions/User NV/User NVG



The usage and remaining of user NV and user NV graphics area can be confirmed. The communication condition can be changed by push the “Set status” button. The displayed item may differ depending on the printer model.

Functions

- Baudrate

Displays the baudrate of the communication condition saved in the NV memory of the printer.

- Parity

Displays the parity of the communication condition saved in the NV memory of the printer.

- Flow control

Displays the flow control of the communication condition saved in the NV memory of the printer.

- Data length

Displays the data length of the communication condition saved in the NV memory of the printer.



Note:

- In this utility, the flow control of XON/XOFF is not supported. Set to the DTR/DSR control by the printer's Dip switch or the memory switch when using the printer.
- If the printer is connected with parallel interface, or operates by setting Dip switch in spite of being connected with serial interface, the printer operate without changing.
- If the communication conditions in the NV memory are changed, the printer may not be able to communicate. When you changed the communication condition, back to the communication conditions dialog box again, and match the conditions.

User NV usage

Displays the usage of user NV memory.

User NV remaining

Displays the remaining of user NV memory.

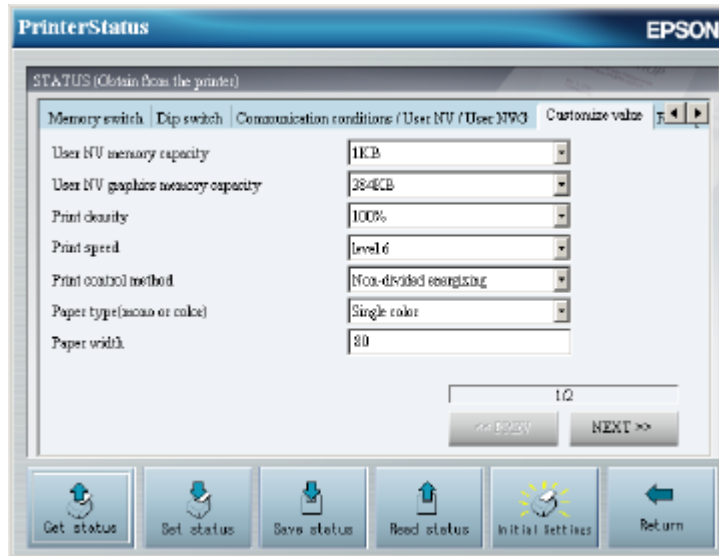
User NVG usage

Displays the usage of user NV graphics memory.

User NVG remaining

Displays the remaining of user NV graphics memory.

4.5 Customize Value



The value of this screen can be changed by push the “Set status” button. The displayed item may differ depending on the printer model.

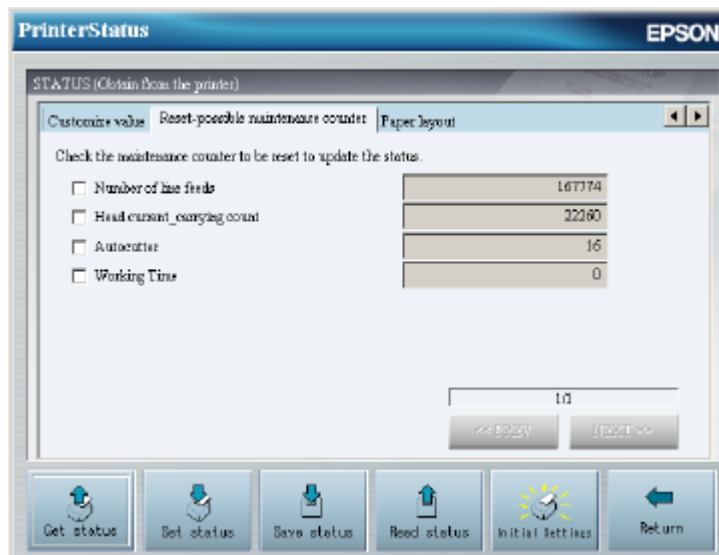


Note:

You need to set the “user NV memory capacity” and “user NV graphics memory capacity” on this screen after you confirm a combination in which those setting is possible.

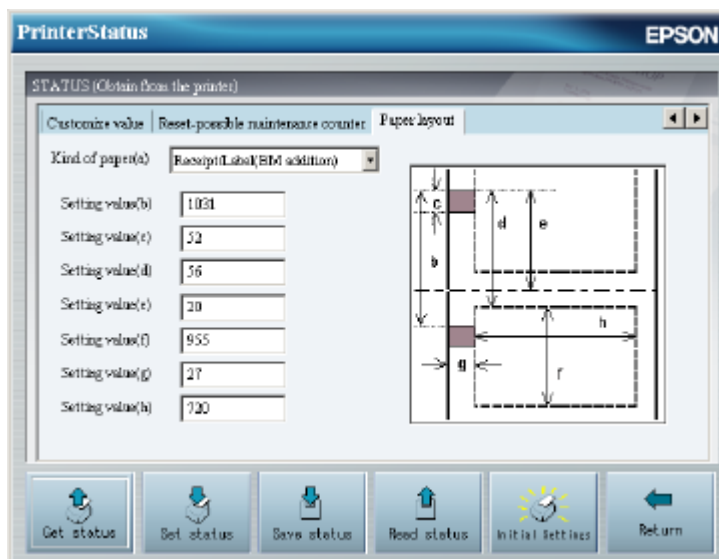
4.6 Reset-Possible Maintenance Counter

The <<PREV button or NEXT>> button is displayed on the screen when the items can not be displayed.



A check marked maintenance counters can be reset by push the “Set status” button. The displayed item may differ depending on the printer model.

4.7 Paper Layout Setting



- Kind of paper (a)

The kind of paper is displayed. And the paper layout setting can be cleared when the "Clear" is selected in this item.

Setting value (b)~(h)

The length of the portion illustrated in the paper image area that is on this screen is displayed per 0.1 mm.

Setting image of paper

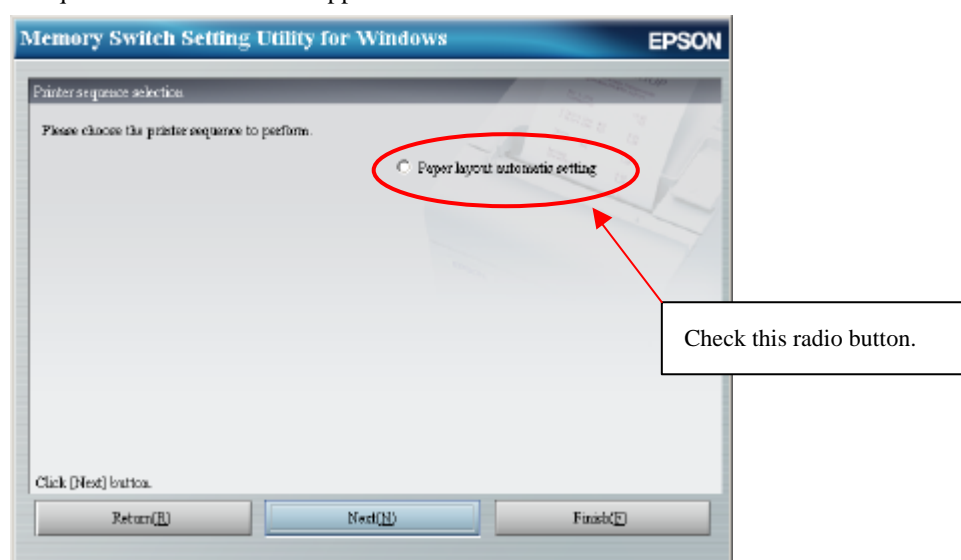
The bit map data corresponding to the kind of each paper is displayed in this area. This image is changed after the status is got, or the other kind of paper is selected on the screen.

5 Printer Sequence

Memory Switch Setting Utility can execute the following printer sequences.

5.1 Paper layout automatic setting

When the connected printer model is a ravel printer, displays the function in which the kind of paper can be change. When you click [Next] in the “Communication conditions” screen, the Printer sequence selection screen appears.



By this function, you can make the printer recognized what the kind of paper when the other paper is inserted. Necessary information to execute “paper layout automatic setting” is displayed on the screen. Read the information and the click [Next] button.

Return (R)

Return to the Communication setting screen.

Next (N)

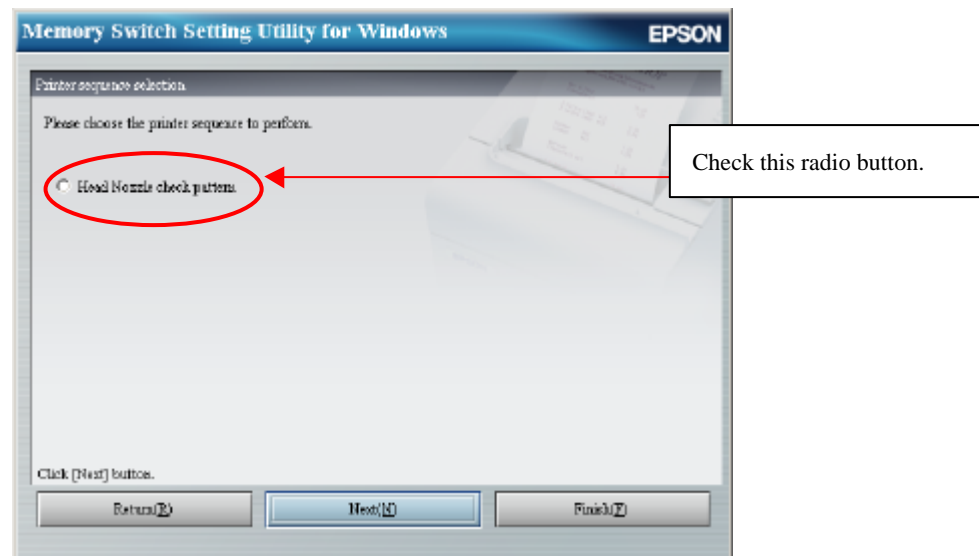
Go to the next operating screen.

Finish (F)

Stop the operation and terminate TMSSUTL.

5.2 Head Nozzle check pattern printing

When the connected printer model is a inkjet printer, displays the function by which you can confirm whether each nozzle of Print-Head operates normally. When you click [Next] in the “Communication conditions” screen, the Printer sequence selection screen appears.



Necessary information to execute the Printing of the Head Nozzle check pattern is displayed on the screen. Read the information and the click [Next] button.



Note:

When you are not satisfied with the print result, clean the nozzle according to the on-screen information and print again.

Return (R)

Return to the Communication setting screen.

Next (N)

Go to the next operating screen.



Finish (F)

Stop the operation and terminate TMSSUTL.

6 Appendix

6.1 Error Messages

You might see the following messages while using Memory Switch Setting Utility (TMSSUTL).

Class	Error message screen	What to do
Communication		<p>Make sure of the following points and then click [Retry].</p> <ul style="list-style-type: none">- Does the communication parameter match the printer?- Is the I/F cable surely connected?- Is the printer turned on?- Is the printer online? <p>Click [Cancel] to cancel the operation.</p>
Command line		<p>Is the printer model selected on the screen in agreement with the model of the printer used now?</p> <p>Confirm the printer model.</p>

6.2 Information of this utility's version

The menu is displayed when the icon on title bar which is above this utility's dialog is clicked. See the Dialog displayed by selecting "Version information (TMSSUTL)" on the menu.